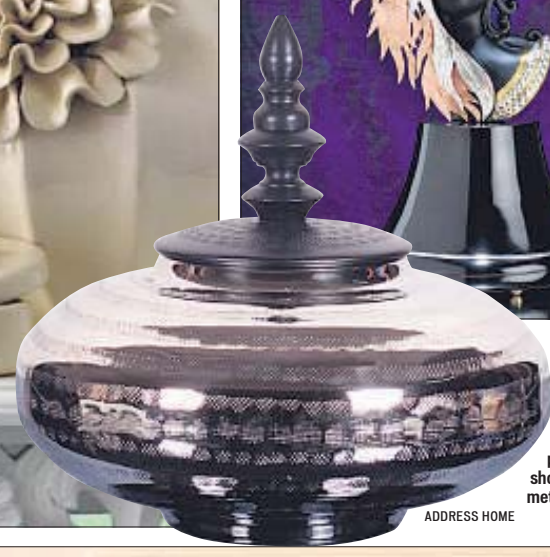


MIXED METALS

Pair your favourite metallic shades to give your décor a facelift



Avoid going overboard by using single metallic elements such as statement accent pieces (above) or a metal jar (left).

ing tones of the colour for an unconventional look.
Out and about
 So which areas of the home does this trend work best for? Your entire living space is a fitting canvas.
 Use a mixed metallic wall-paper in your living room for a touch of drama or create a wall collage with metallic frames in differing shades. Play with cooler metallic shades in the kitchen or experiment with complementing warm tones for your upholstery. If nothing else, the trend works very well in accessories like name plates, table mats, serving bowls, candles, cushion covers and bed linen.

Balancing act
 A décor trend can work its charm only when used in moderation. Overdoing it will lead to an overbearing look. Jain rightly points out that too many metallic elements in a room will make it look cold and clinical. "In fact it's wise to balance the use of metals

Praachi Raniwala
 htspcalprojects@hindustantimes.com
 There's no denying that metallic tones have always been a favourite when it comes to home décor. But these tones, it seems, are done playing solo and are now teaming up with each other to create a greater impact.
 "Metal has always been an integral part of décor, being used everywhere from wallpaper and flooring to appliances and furniture. It helps that metallic accents pair well with styles ranging from classic and modern to minimalistic.
 The trend is currently moving away from a single metal dominating a room towards layering metallic finishes against each other. "This gives the room a natural look instead of a staged one,"

explains Harsh Jain, CEO and founder of Nestopia, an online interior design marketplace.
Two of a kind
 The interplay of metallic colours working together can give a room a regal air and create a strong visual impact. But does that mean all metallic tones can be mixed together? As it turns out, some combinations are better than others. The trick is to marry warm metallic tones with cooler ones for the right contrast. The evergreen combination of gold and silver is a classic example. Siddharth Rungta, partner at the online store Decorstory.in, advises picking colour palettes that bring out each

other's best visual quality. "Copper and gold complement each other when used in the correct ratios," he says.
 The combinations obtained by mixing warm metals like gold, brass, bronze and copper with cooler shades such as steel, nickel, silver, white gold and aluminium can weave magic," he says. Kaizad Dinshaw, founder and creative head of the interior design practice Nitido Design, feels that mixing carbon

A WORD OF CAUTION
 Bear these points in mind to avoid going wrong when mixing metals at home:
 ■ Pay attention to the lighting of the room in which you are mixing metallic shades to understand the final effect.
 ■ Don't just mix colours. Mix the texture of the metallic tones as well.
 ■ Don't mix too many styles. Every element should tie in with the overall concept.
 ■ Stay away from jarring tones. The ultimate look you create should be elegant.

(With inputs from Harsh Jain, founder, Nestopia; Kaizad Dinshaw, founder, Nitido Design and Siddharth Rungta, partner, Decorstory.in)

steel with beaten copper, or chrome with pink gold can create an interesting look. If you are wary of how two or more opposing shades will react together, simply go the ombre route — marry vary-



Warm metal shades like gold, brass, bronze and copper contrast well with cooler shades such as steel, nickel, silver, white gold and aluminium.



A showpiece in gold reflects light in different ways.

with natural elements such as wood. Make sure that the colour tones complement each other," says Rungta. "Black and chrome work well with wooden tones. Dull brass works wonderfully with textured hardwoods whereas polished copper and mirrors complement each other," says Dinshaw.
 You can also consider throwing in marble, stone, velvet and other fabrics to the mix to maintain the right balance of elements in the look.

www.regencygroup.co.in

QUALITY LIFESTYLE IN THANE IS NOW READY TO BE LIVED

Life has become demanding, and so have you. While you give it your best shot, all you expect in return is lavish and quality living. At Regency Heights, this is exactly what awaits you in the form of 2/3/5 (combined) BHK ready-to-move-in spacious apartments.



Kolshet Road, Thane (West)

READY POSSESSION
 2/3/5 (COMBINED) BHK SPACIOUS APARTMENTS
 OCCUPATION CERTIFICATE OBTAINED
 CONVENIENTLY LOCATED

No Stamp Duty, Registration, VAT and Service Tax
 Offer on limited flats for limited period

Our state-of-the-art amenities include:

- Kids' Play Area with Sand Pit
- Swimming Pool Kids' Pool
- Steam Room
- Jacuzzi
- Aerobics
- Squash Court
- Meditation Room
- Community Hall



All images are actual



LIBRARY



BADMINTON COURT



INDOOR GAMES



MINI THEATRE



GYMNASIUM

Regency Heights, Near Brahmmand Phase 1, Azad Nagar, Kolshet Road, Thane (W) - 400 607. | info@regencygroup.co.in | Tel.: 90222 79000 Like us on

Disclaimer: The information in this advertisement is indicative of the kind of development that is proposed. Subject to the approval of the authorities or in the interest of continuing improvement, the developers reserve the right to change the layout, plans, specifications or features without prior notice or obligations.